



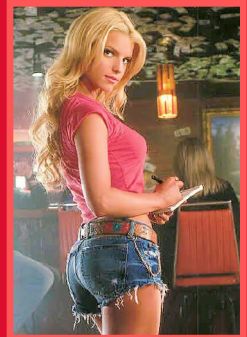
**SASQUATCH CAUGHT USING ANSYS!**



**Prof. Jargon  
Spending  
Anna  
Nicole's  
Money and  
Using Her  
For Free  
Trim Spa!**

**The True Story  
Behind Anna's  
Drunken Displays**

**ALL THE  
DETAILS INSIDE**



**HF EMAG!**

**Jessica's  
Hidden  
Secret**

**THE REAL STORY**

# THE NATIONAL **Focuser**

**Analytical Minds Want to Know**



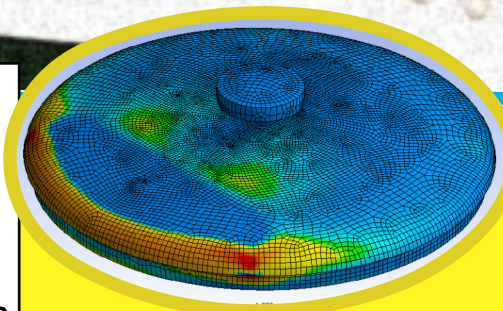
**ANSYS 11.0  
Dumps PLANE2  
For Newer Element**

**30+ YEAR RELATIONSHIP ENDS WITH TEARS**

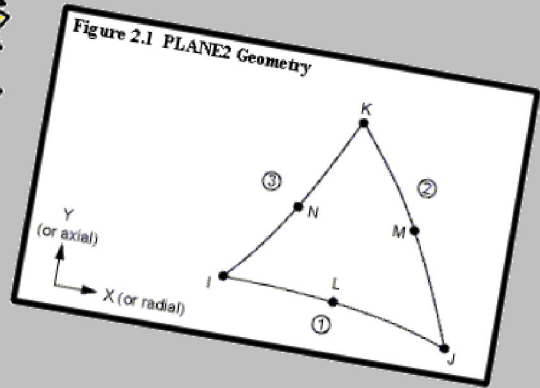
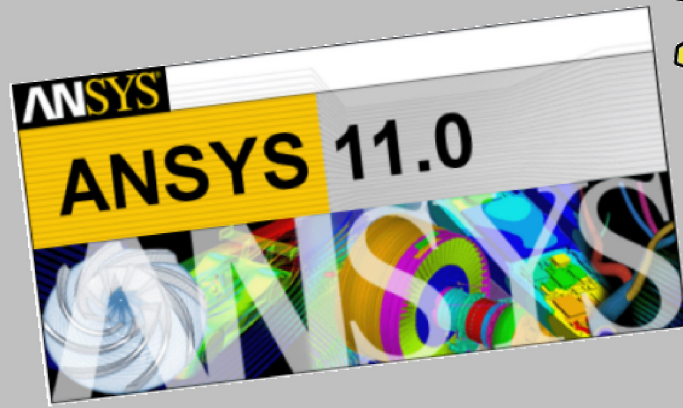
**Issue 50 of The Focus**



**www.padtinc.com/epubs**



**Multiphysics Used  
to Design Alien  
Spacecraft**



# PLANE2 Told to “HIT the Road” by Version 11.0



In the ANSYS world, no element is secure. After decades of dedicated service PLANE2 was told to “Hit the Road” and find a place to retire by the up-and-coming release of ANSYS, 11.0. No one knows for sure how long PLANE2 has been in ANSYS but such a

low number points to a long history. One that was not long enough to let it keep its place in the software for brush 11.0.

By all accounts, the breakup was not so pretty. Sources told the Focuser that PLANE2 has been suspicious of the new, sexy 18x element family for some time.

“PLANE2 thought that its long service would keep it around” said an insider “but rumors were spreading about V11 and PLANE183 spending a lot of time together. Weekends downtown, late night ‘meetings’, that sort of thing. Next thing you know PLANE2 is running down the hallway crying. The day after, PLANE2 was listed in the ‘Undocumented Elements’ table.”

Another source who claims to be close to the former Mid-Side node trail blazer, told the Focuser that PLANE2 is bitter. “She is so upset. To be replaced by a younger element is one thing, but a DEGENERATE version of a younger element? That is just an insult!” The source did not know what PLANE2’s plans were for the future, but shared a rumor that PLANE2 was seen on the other side of Pittsburgh hanging out in the ALGOR parking lot, harassing the company’s developers as they went to and from work.



This exclusive photo of PLANE2 clearly shows how upset she is over being replaced by a younger, degenerate element



# Prof. Jargon Dumps ANSYS Education for Fast Times with ANS!

Where in the world has Professor Jargon gone? Your trusty reporter in the field has tracked him down, and what I've found may shock you.

It seems that our favorite walking-FE dictionary has gone Hollywood, by courting the former playmate turned reality star turned world-class buffoon, Anna Nicole Smith. He has faithfully stood by her as she fought the good fight at the Supreme Court to get the money that is rightfully hers.

I managed to catch up with Jargon when he wasn't by Anna's side to get the real scoop on this new relationship. "To be honest, I'm in it for the money...and the never-ending supply of Trim Spa."

Amazed, I asked him if he was serious, since I was considering this new Hollywood power couple the next Brangelina.

Jargon looked me straight in the eye and informed me how hard he had been trying to lose the baby fat, and how much Trim Spa had helped out.

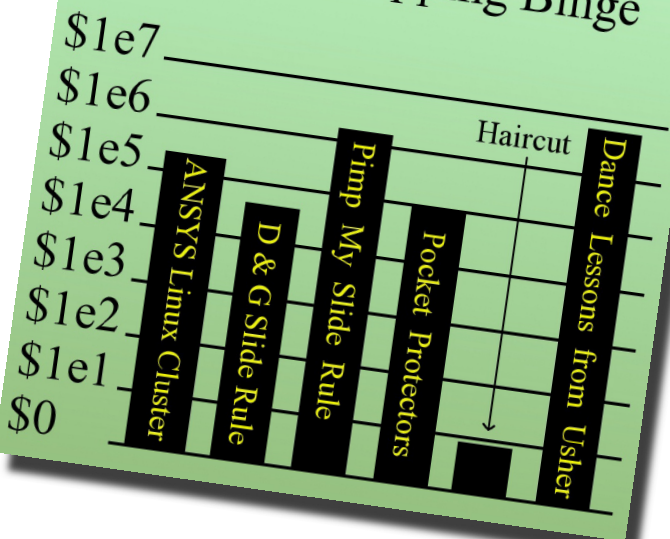
"Don't get me wrong, I've been a huge Anna Nicole fan for years, if you catch my drift. But I can't get serious with someone who only reads the *Focus* for the pretty pictures." he said with a wink. "But, it's never a boring time. If she's knocked a few back, she'll pretty much do anything you suggest. Just look at what happened at the MTV Music Awards in Sydney. You can thank me for that!"

Wherever this relationship goes, we wish them all the best.

As for next week, I'll report on the APDL Guru's latest rehab stay, and whether or not he's conquered his addiction to Nyquil.



## You bought What?!?! Prof. J's Shopping Binge





NASA Scientists Confirm Findings:

# BIGFOOT USES ANSYS



The scientific community has confirmed the recent findings of the elusive Sasquatch of whom existence was confirmed over the weekend. After independent researchers have examined hair samples, footprints, and the now hugely publicized photographic evidence captured by an amateur photographer, Mee Kam Ping on his canon S200.

Ping remarks, “Really, most people told me 2 megapixels wasn’t enough... and I just kept saying they were playing into the hands of the manufacturer advertising – I figured what was good enough for Renoir, is good enough for me... Now that I have that grainy photograph of Sasquatch, I have to admit, a few more pixels would’ve maybe upped its value.”

As researchers combed the surrounding area of dense forest, tell-tale signs began pinpointing the Sasquatch’s territory. Forensic investigator, Will B. Gross, comments, “Well, after study of footprints and droppings we discovered he walks with huge strides, maintains a subhuman hygiene, and seems to eat a lot of peanuts, and the occasional crayon.”



The most revealing data has come with yesterday’s discover of the Sasquatch’s lair. The bare-bones living style one might expect from this species was contrasted sharply by a surprising level of computing power. Although the discovery that the primitive animal developed a series of Internet “booster” stations providing highspeed Internet access deep into the dense jungle habitat served to embarrass metropolitan areas still unable to provide a wi-fi umbrella, that revelation will soon be dwarfed as questions about his power supply are further explored.

Gross added, “We’re still analyzing the laptop for data, but as you can see in the photo, the Sasquatch clearly uses ANSYS for finite element analysis, as well as entertainment as evidenced by the log file’s frequent execution of Dave Lindeman’s ‘battleship’ macro.”



Further, pages found of frustrated scribbblings of symbols and scratches seem to be derivations of engineering equations which although confirm the high level of intelligence, serve to highlight the diminished ability of recollection. So far, the results of the FEA have been accurate (and is of course a relief to the Sasquatch’s customers) which seems to be a great credit to the software manufacturer, ANSYS, Inc. Rumors persist of a 2007 marketing catch-phrase involving the phrase “It is so easy, a pre-hominid genetic dead-end could use it” about which pre-hominid rights suits are already being formulated.

As data continues to pour in from the findings, a clearer picture is sure to develop, hopefully answering the public’s questions of: Who were his customers? Did they know? Did he still use the discouraged \*GO command, the 18X elements, mid-side nodes? And perhaps most importantly to understanding what connection exists, if any, to our own human psyche – for what types of problems does he use Workbench?

Regardless of the answers, as the Bigfoot’s customer’s scramble to replace the now missing analyst, they are sure to have some big shoes to fill.

# ANSYS Solves for UFO Design

PADT investigators have concluded that alien space craft design has been carried out using finite element analysis. The investigation began in 1997 with the infamous "Phoenix Lights" sighting" (wikipedia: Phoenix Lights). Our researchers sought to interview scads of expert witnesses, military and government officials as well as UFO experts. However, since we were lazy, we based our investigation on rumor and speculation instead. We pride ourselves on our journalistic abilities. We recall the quote from

deaths in the 1990's. Apparently the dry heat reminded them of their home planet. Mr. Lunay remarked as an aside that they were very fond of Winston Churchill, Pac-Man, and the Three Stooges.

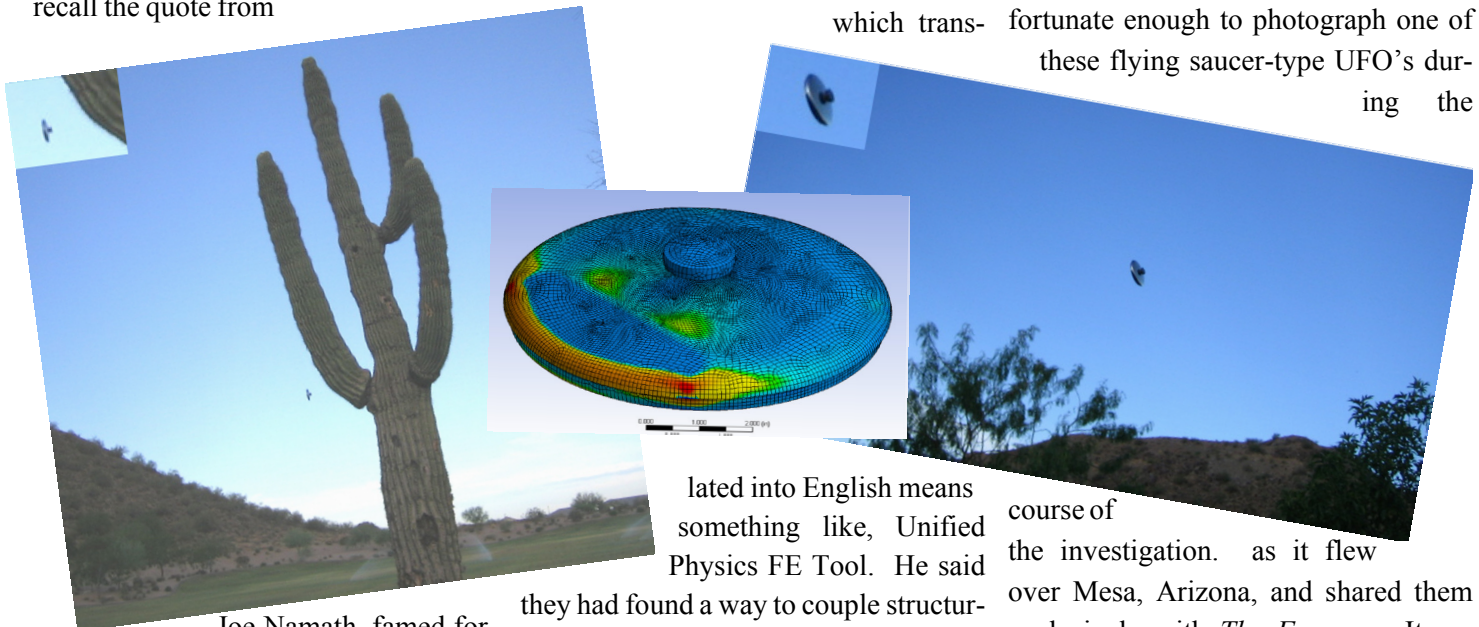
Further, Mr. Lunay had worked with the aliens to gain an understanding of their space craft design process. Although he claimed to be sworn to secrecy on what he knew, he did share with us that the aliens had used a finite element code

known as GLOP!%, which trans-

significantly less than the age of the universe.

PADT has developed a GLOP!% to ANSYS translator and, although we weren't able to translate all the entities with 100% fidelity, we were able to postprocess one of the simulations obtained from Mr. Lunay. Note that PADT can provide you with GLOP!% to ANSYS translation services, should you have a need for such a transfer.

Also note that one of our reporters was fortunate enough to photograph one of these flying saucer-type UFO's during the



Joe Namath, famed former quarterback of the New York Jets. He was once asked if he had studied basket weaving in college. Broadway Joe's reply was, "No, man, I majored in journalism. It was easier."

With that spirit in mind, we did manage to interview a claimed former government worker who identified himself as Mr. Lunay. Mr. Lunay showed us documents proving that he had worked at the secret government facility known as Studio 51 in the back of a warehouse in downtown Phoenix. It was actually here that the surviving aliens who crashed their UFO at Roswell, New Mexico, in 1947 were housed until their

lated into English means something like, Unified Physics FE Tool. He said

they had found a way to couple structural, thermal, and electromagnetic degrees of freedom with special relativistic elements which included mass increase and time dilation effects at relativistic speeds. Using what they called their Omni-Field Solver they were able to complete an FE simulation for a set of Andromeda uncertainty simulations for a sample service load intergalactic flight including variation in the output for scatter in the inputs. For example, varying Hubble's constant while also varying the gravitational effects of nearby black holes could easily be completed in one simulation. This simulation was solved on their main compute planet with a solution time

course of the investigation. as it flew over Mesa, Arizona, and shared them exclusively with *The Focuser*. It appears to be the same sort of device as was analyzed in the FE model. Rigorous analysis of the photographs has determined that they are not digitally enhanced, proving that the object is real. No sound was observed while the object was in the air.

It is unclear if any of this advanced FE technology has found its way into earthly vehicles. Mr. Lunay only smiled when asked this question. He then drove off in his Pontiac Aztek. Repeated attempts to contact Mr. Lunay again have proved fruitless. We'll keep you posted on any new developments.



# Jessica Simpson: NERD?!?!

Professional Dumb Blond Jessica Simpson was spotted by paparazzi leaving the world wide headquarters of ANSYS, Inc. near Pittsburgh PA. After questioning sources within the company it was discovered that she has been a long time member of the company's Software Advisory Council.

When asked what role she played, the unnamed source answered "Jessica? Most people don't know it but she is a High Frequency Electromagnetics whiz. She was our 'Go to Girl' for the new embedded source ports in 11.0"

Further investigation showed that the "Dukes of Hazzard" star has been involved in conducting analysis of high frequency wave guide devices for the past four years. Questioned further

our source even revealed that "today she showed off her new tattoos! Maxwell's Equations never looked so incredibly sexy! Unfortunately she only showed us three out of the four, the last one being a little to far below the waist line"



## News from Around the World

### Honda Sales to ANSYS Users Unexpectedly Strong

*Small SUV Particularly Popular*

MARYSVILLE, OH—Honda is a popular auto manufacturer among engineers, many of whom value practicality and reliability. However, dramatic spikes in recent sales data have caused executives at American Honda to take notice of this often-ignored market.

"It's a demographic we never really anticipated," said puzzled regional sales manager Matthew Tsai-Wu. Sales of Honda's small SUV have driven the trend, according to Tsai-Wu. "Apparently they all want the Element. They keep asking me how many nodes it has."

### Experiments with IEA Software Continue

*Promising Method Limited by Computing Power*

ALBUQUERQUE, NM—Los Sandios National Laboratories is experimenting with a variation on finite element analysis: infinite element analysis. Elea Zeno, LSNL's lead researcher on the IEA project, says that computing power is the limiting factor.

"While the IEA method is quite promising, we end up with some extremely large meshes.

No matter what machine we run these analyses on, they take a long time to solve. Even on a 512-CPU cluster, solving an infinite element analysis problem takes, like, forever," said Zeno.



## BAT BOY UPDATE

We couldn't come up with any BAT BOY - ANSYS ideas, but you can't do a fake tabloid without his adorable mug - so here he is.

This issue marks the 50th issue of "The Focus" from PADT. We hope that all of you out there have gotten as much knowledge and fun out of this effort as we at PADT get from creating it.

If you have not figured it out already, everything in this issue is completely made up. Non of it is true.

The world of ANSYS has given us a great career, and this is our little way of giving something back.

- PADT's Tech Support Staff